



**Mine Lighting Systems**  
**Mining Controls Inc.**  
**P.O. Box 1141**  
**Beckley, WV 25802**  
**304-252-6243 ext 1510**  
**larry.rowley@elginindustries.com**  
**www.minelinesystems.com**

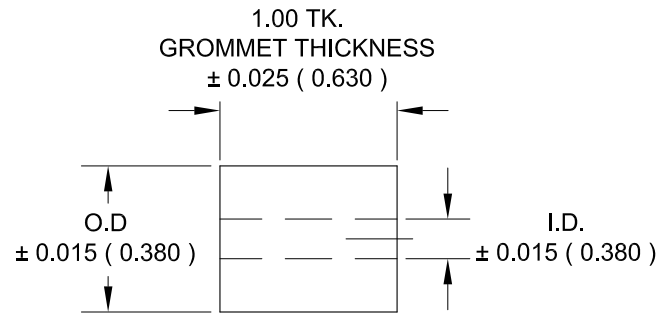
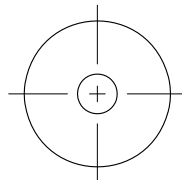
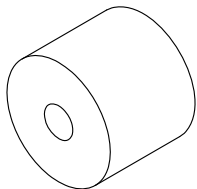
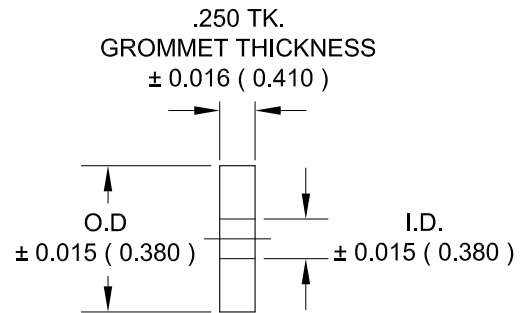
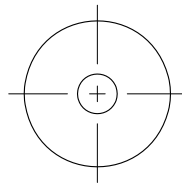
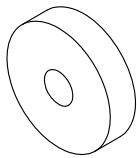
# GROMMET PACKING GLAND MATERIAL SPECIFICATIONS

STANDARDS FOR MOLDED & EXTRUDED RUBBER PRODUCTS  
 RMA  
 RUBBER MANUFACTURED ASSOCIATION  
 MO-1 1992

STANDARD DIMENSIONAL TOLERANCE TABLE- MOLDED RUBBER PRODUCTS  
 DRAWING DESIGNATION "A3" COMMERCIAL GRADE MATERIAL

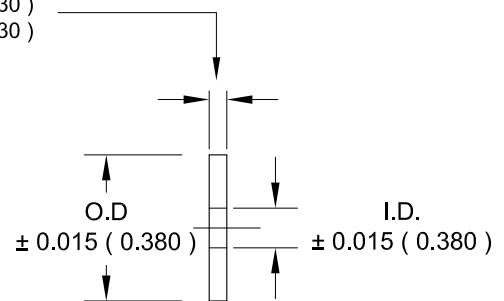
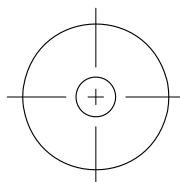
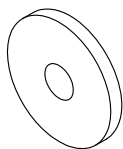
( INCHES )		( MILLIMETERS )	
SIZE or THICKNESS	± DIM. TOLERANCE	SIZE or THICKNESS	± DIM. TOLERANCE
0 - .39	± .016	0 - 10	± .25
.40 - .62	± .020	11 - 16	± .32
.63 - 1.0	± .025	17 - 25	± .40
1.01 - 1.60	± .032	25 - 40	± .50

## WATER-JET CUT RUBBER SHEET GROMMET



## WATER-JET CUT STAINLESS STEEL BUSHING

CUT FROM 16 GAUGE 304 STAINLESS SHEET = .0595" TK. ± .005 ( 0.130 )  
 CUT FROM 11 GAUGE 304 STAINLESS SHEET = .1200" TK. ± .005 ( 0.130 )



THE ABOVE SPECIFICATIONS ARE BASED ON INDUSTRY STANDARDS  
 AND WILL NOT BE DEVIATED FROM.