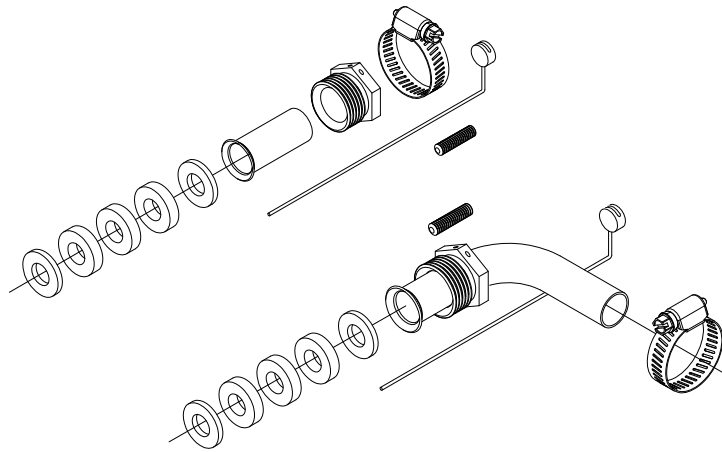


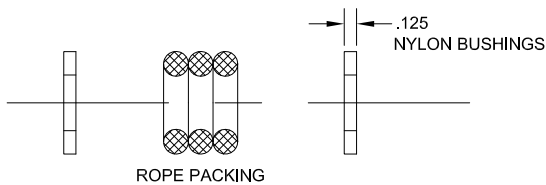


**Mine Lighting Systems
Mining Controls Inc.
P.O. Box 1141
Beckley, WV 25802
304-252-6243 ext 1510
larry.rowley@elginindustries.com
www.minelinesystems.com**

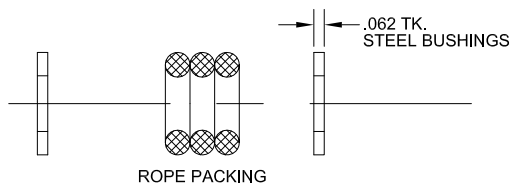


MINING CONTROLS INC. TYPES OF GLANDS USED

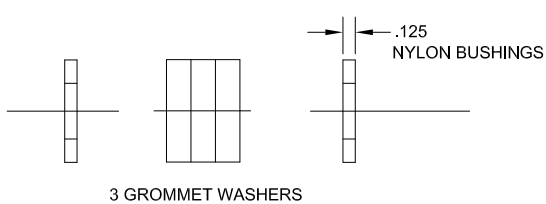
PACKING ARRANGEMENT WITH NYLON BUSHING



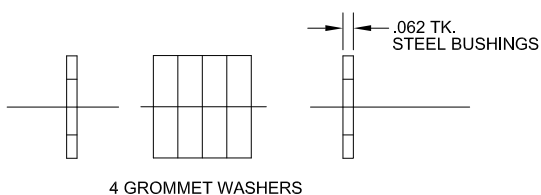
PACKING ARRANGEMENT WITH STEEL BUSHING



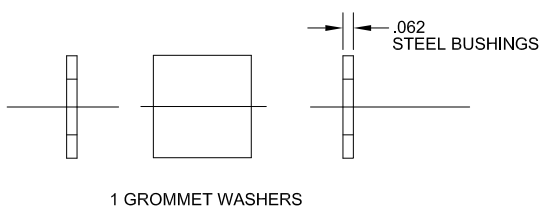
PACKING ARRANGEMENT WITH NYLON BUSHING



PACKING ARRANGEMENT WITH STEEL BUSHING



PACKING ARRANGEMENT WITH STEEL BUSHING

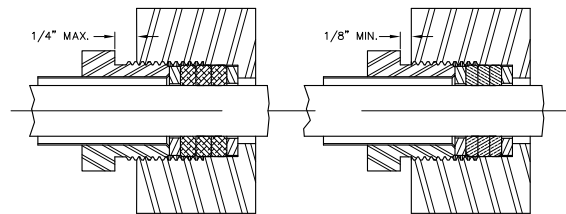


GLAND PACKING INSTRUCTIONS

GROMMET PACKING MATERIAL

1. INSERT NUT OVER CABLE.
 2. INSERT TUBE (IF USED) OVER CABLE.
 3. INSERT ONE BUSHING OVER CABLE.
 4. INSERT THREE OR FOUR GROMMETS OVER CABLE.
 5. INSERT ONE BUSHING IN STUFFING BOX.
 6. INSERT END OF CABLE THRU BUSHING & STUFFING BOX.
 7. INSERT GROMMET AND OUTER BUSHING INTO STUFFING BOX AND TIGHTEN NUT SECURELY.
 8. WHEN NUT IS TIGHTENED THERE MUST BE A MIN. OF THREE THREADS ENGAGED.
- FOR MOST APPLICATIONS TIGHTEN NUT TO A 1/4" GAP AND STOP. 1/4" MAX. TO 1/8" MIN. LEFT TO TRAVEL WITHOUT MEETING INTERFERENCE FROM ANYTHING EXCEPT GROMMET.

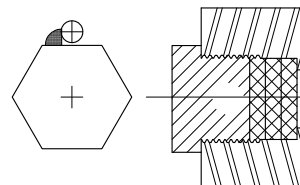
NOTE: DO NOT REUSE GROMMETS AFTER BEING COMPRESSED, ALWAYS USE NEW GROMMETS.



To inspect the gland assembly, use the following procedure :

1. Remove the locking device i.e. (lock screw or seal wire.)
 2. With your hand, tighten the gland nut.
 3. Check the gap between the housing and the underside of the nut closest to the housing. (see above)
If the gap is less than 1/8", replace the grommets and bushing.
(CONTACT MINING CONTROLS FOR REPLACEMENT GROMMET KITS)
 4. If the gap is greater than 1/8", the gland assembly is good.
 5. Replace the locking device.
- Note : the movement of the gland hose tube has no bearing on whether the gland is properly packed.

If you have any questions please contact:
Lynn M. Huggins, Mining Engineer, QA & MTD MSHA 304-547-2073
huggins.lynn@dol.gov
LarryWRowley, Manager of Lighting & Camera Products, Mining Controls Inc.
304-252-6243 ext 1510
larry.rowley@elginindustries.com



PACKING GLAND PLUG

1. INSERT 3 GROMMET WASHERS IN STUFFING BOX, TO MAKE A WATER TIGHT SEAL.
2. START PLUG & TIGHTEN SECURELY.
3. TACK WELD PLUG IN PLACE.