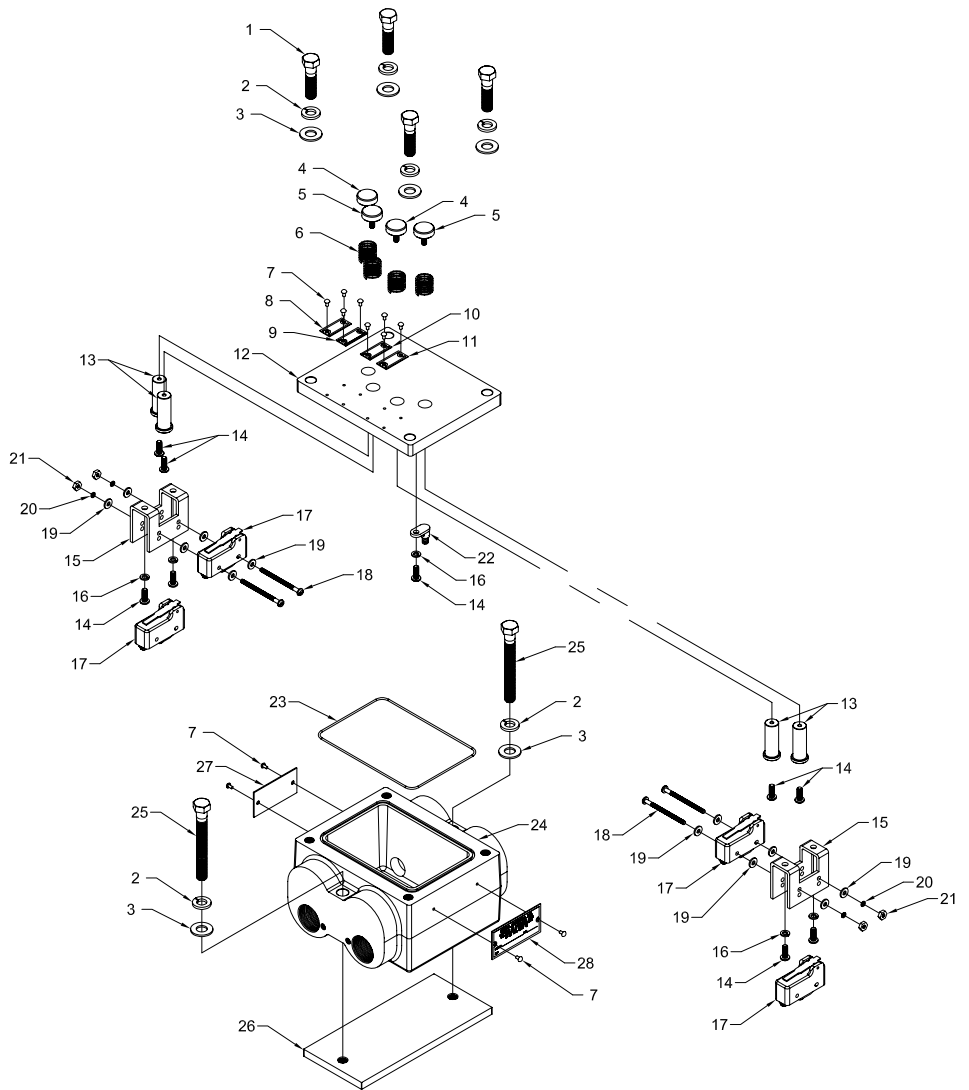




Mine Lighting Systems
Mining Controls Inc.

P.O. Box 1141
Beckley, WV 25873
304-252-6243

Larry.Rowley@elginindustries.com
www.minelinesystems.com



7015-35400-88

UP/ DOWN/ ENTER / ESC PUSH BUTTON BOX

BILL OF MATERIAL FOR 7015-35400-88
UP / DOWN / ENTER / ESC PUSH BUTTON BOX WITH 4 EA. 1 1/8-12 PACKING GLAND
OPENING 2 ON EACH SIDE.

Item	Qty.	Part Number	Description
1	4	1041-50006-4	BOLT 3/8 - 16 X 1 1/4 HEX
2	6	1041-50008	LOCK WASHER 3/8
3	6	1041-50007	FLAT WASHER 3/8
4	2	1022-20112-1	BLACK PUSH BUTTON HEAD
5	2	1022-20112	RED PUSH BUTTON HEAD
6	4	3016-21116	SPRING
7	12	1041-50005	DRIVE SCREW 4 X 3/16"
8	1	1044-20110-6	TAG UP
9	1	1044-20110-7	TAG DOWN
10	1	1044-20110-26	TAG ENTER
11	1	1044-20110-27	TAG ESC
12	1	2010-29950-11	COVER WITH FOUR PUSH BUTTON HOLE
13	4	5015-20113	SHAFT FOR ("E" STOP & START - STOP)
14	8	1041-50000-15	SCREW # 10 - 24 X 3/8 ROUND HEAD
15	2	2022-33386-6	SWITCH MOUNTING BRACKET
16	5	1041-50001-1	LOCK WASHER # 10
17	4	1022-33376	MICRO SWITCH
18	2	1041-50038-7	SCREW # 6 - 32 X 2 ROUND HEAD
19	12	1041-50041	FLAT WASHER # 6
20	4	1041-50042	LOCK WASHER # 6
21	4	1041-50039	NUT 6 - 32 HEX
22	1	1035-20281-3	GROUND LUG
23	1	1033-35436	O-RING
24	1	2010-35403-1	HOUSING WITH 4 EACH 1-1/8 - 12 GLAND OPENING
25	2	1041-50006-9	BOLT 3/8-16 X 3 HEX HEAD
26	1	2022-35418-1	WELD PAD
27	1	1044-20038	TAG PA
28	1	1044-20011	TAG CERTIFICATION

