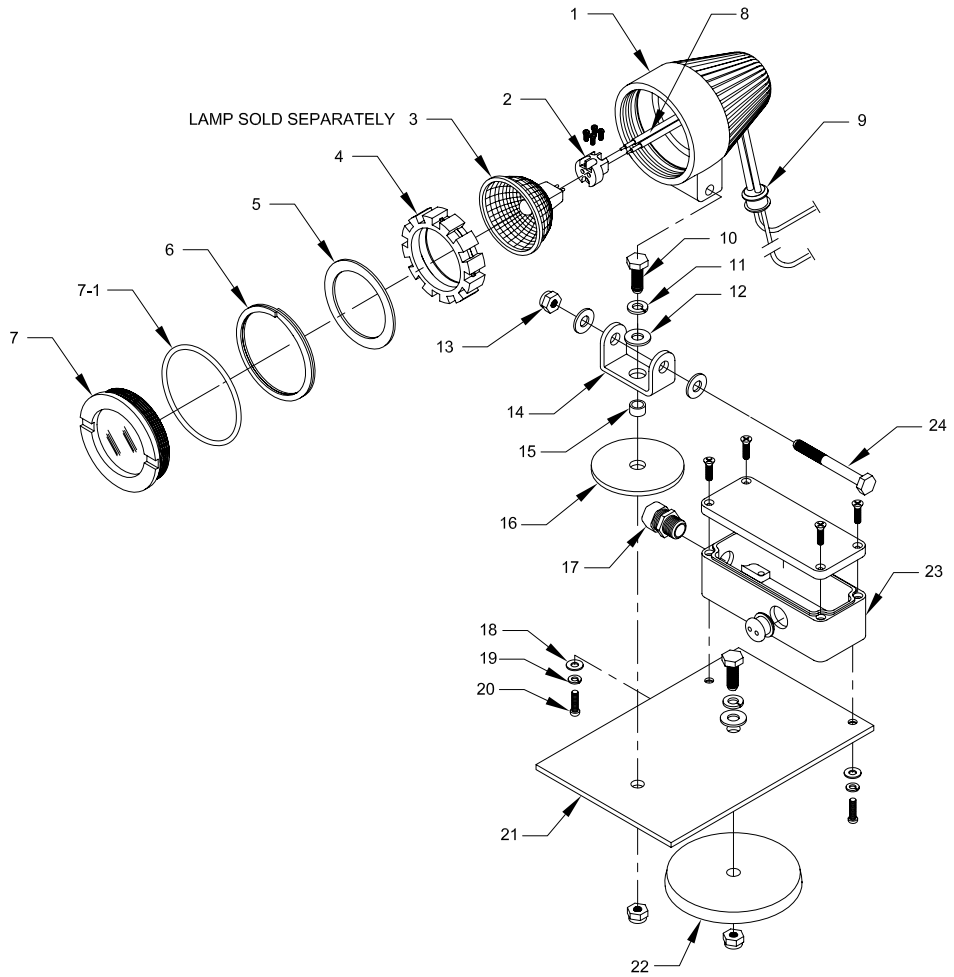




Mine Lighting Systems
Mining Controls Inc.
 P.O. Box 1141
 Beckley, WV 25873
 304-252-6243

Larry.Rowley@elginindustries.com
 www.minelinesystems.com

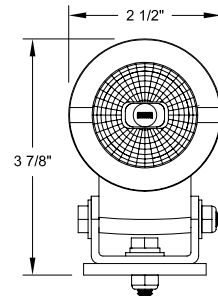


7030-35880-19

T50 WATER TIGHT SINGLE LIGHT BAR WITH LAMP AND MAGNET

Item	Qty.	Part Number	Description
1	1	2010-35771-2	Alum. Housing
2	1	2020-32773-3	Inline Socket
3	1	See Bulb Chart	Lamp Sold Separately
4	1	3018-33571-3	Lamp Holder
5	1	1031-33578	Black Ring
6	1	3015-33835	Snap Ring
7-1	1	2019-34029	O Ring 3/4" x 5/8"
7	1	2010-34128	Clear Lens Assembly
8	1FT	1051-33726	Fiberglass Sleeving size 8
9	2	3018-33620-2	Wire Grip And Seal
10	2	1041-50003-2	Bolt 1/4-20 X 3/4 Hex Head
11	2	1041-50004	1/4" Lock Washer
12	4	1041-50026	1/4" Flat Washer
13	3	1041-50024-2	Nylon Lock Nut 1/4-20 Hex
14	1	2022-33620-1	"U" Mounting Bracket
15	1	2010-33323-1	Spacer Tube
16	1	3018-33620-3	Base Pad
17	1	1037-20404-4	Box Connector
18	2	1041-50030	# 8 flatwasher
19	2	1041-50031	# 8 lockwasher
20	2	1041-50002-15	8/32 x 3/8" RD HD

Item	Qty.	Part Number	Description
21	1	2022-33721-2	Single Light Bar Bracket
22	1	2021-31172-4	5" Round Magnet
23	1	1048-33785	Alum Connection Box
24	1	1041-50003-18	Bolt 1/4-20 X 2-1/4 Hex Head



FIXTURE WEIGHT 2 LB. MAX.

