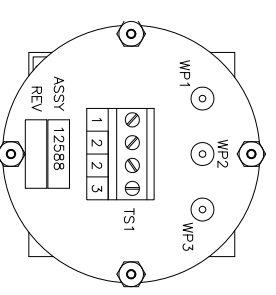
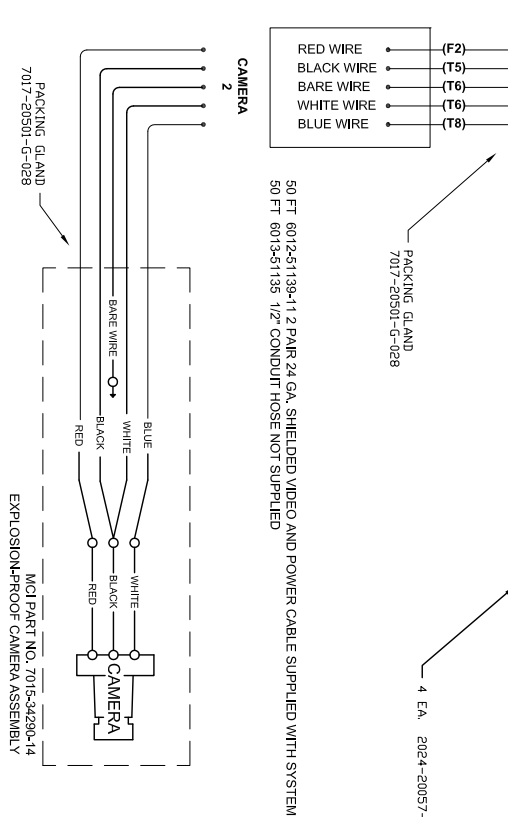
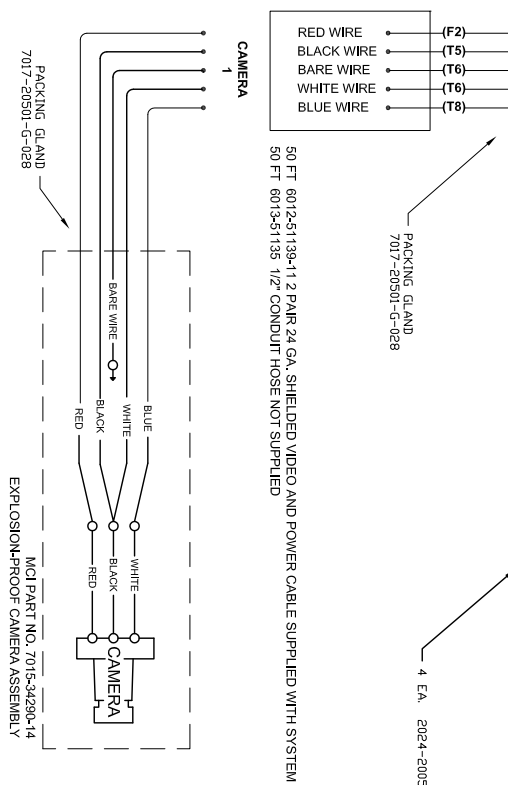
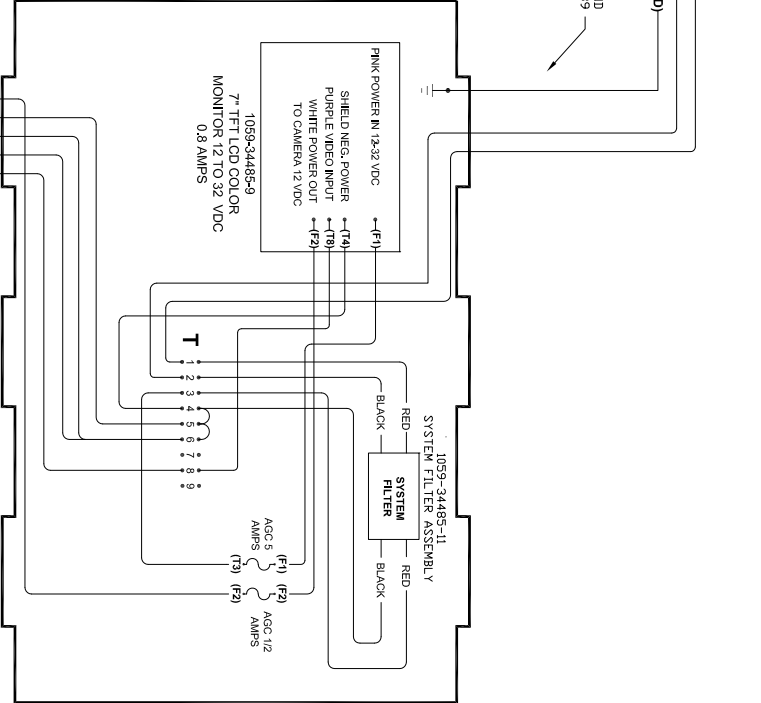
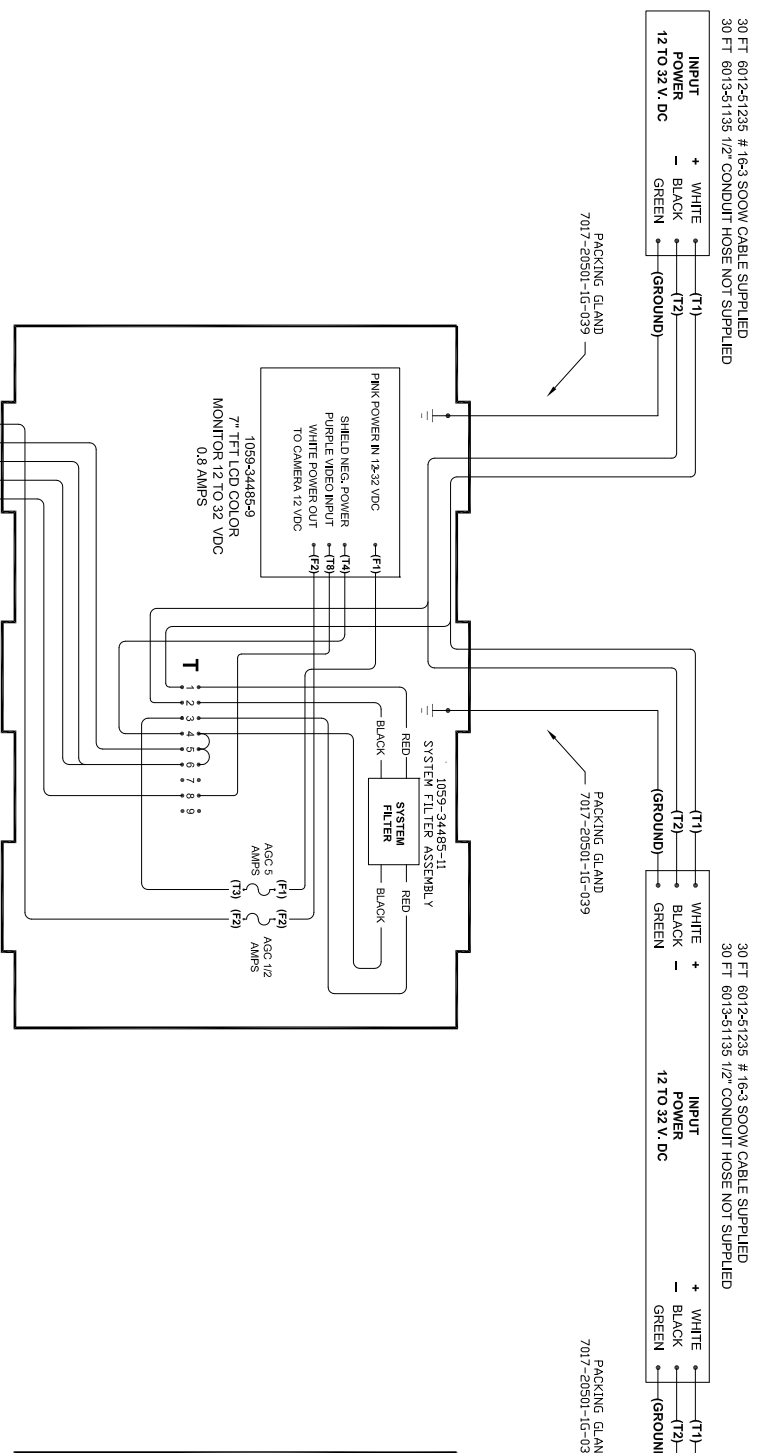
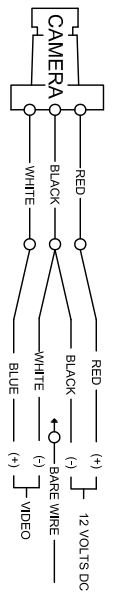


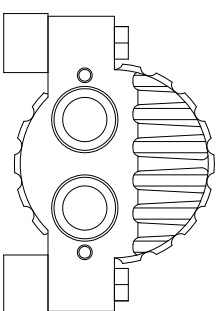
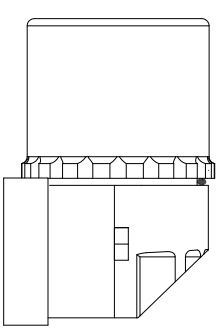
MODEL 34551 CERT. 18-XP A050010-0  
 P/N 7015-34551-19 ALUM. ENCLOSURE  
 7" LCD Monitor With XIP Enclosure For One Camera



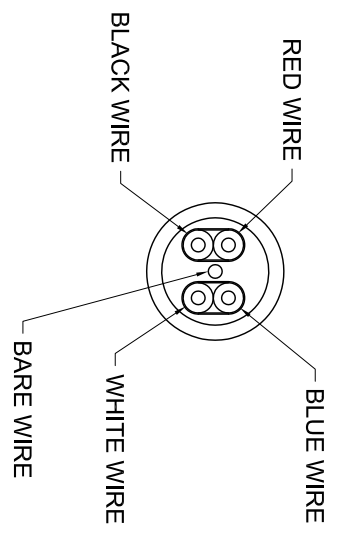
WIRING: BACK VIEW OF CAMERA  
 1 = VIDEO / 2 = COM / 3 = 12 VOLT DC. (+)



MODEL MC150XP CERT. XP 3938-0 & -1  
 P/N 7015-34290-14  
 EXPLOSION-PROOF CAMERA ASSEMBLY  
 600 TV LINES 0.003 LUX 12VDC @ 100mA



6012-51139-11  
 2 PAIR-24 GA. SHIELDED VIDEO AND POWER CABLE



TOTAL SYSTEM REQUIREMENTS  
 12 VOLT DC 2.2 AMPS

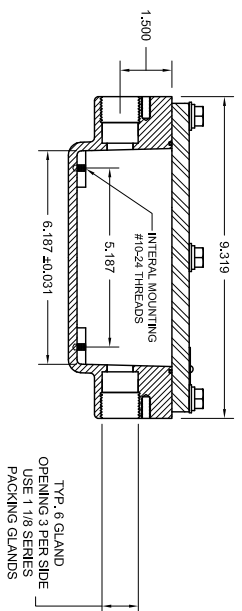
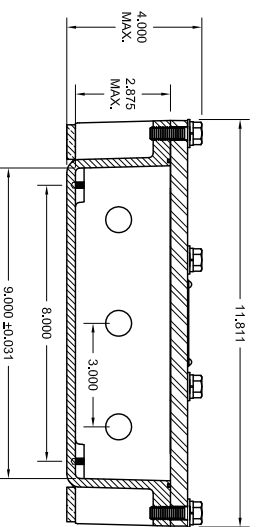
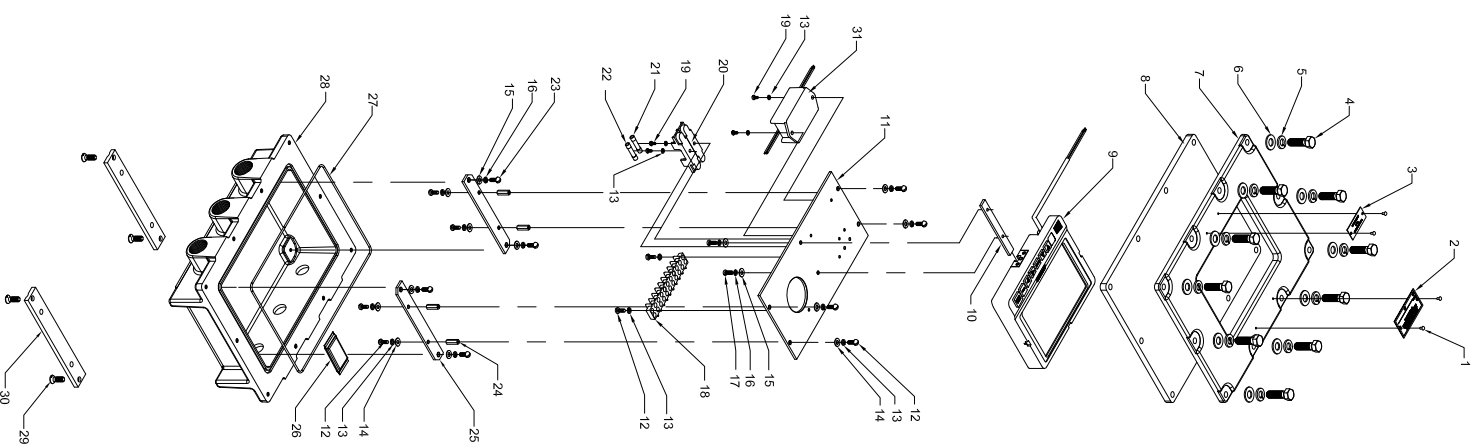


Mine Lighting Systems  
 Mining Controls Inc.  
 P.O. Box 1141  
 Beckley, WV 25802  
 304-252-6243  
 larry.rowley@elginindustries.com  
 www.minelightsystems.com

**7015-34551-19** MSHA Approved 18-XP/PA050010-0

MODEL 34551 XP MONITOR ENCLOSURE ALUM. WITH 7" MONITOR FOR 2 CAMERAS, 12-32 VOLT DC

Item	Qty.	Part Number	Description
1	4	1041-50005	4 X 3/16" DRIVE SCREW
2	1	1044-20011	CERTIFICATION TAG
3	1	1044-33856	TORQUE TAG
4	10	1041-50006-5	BOLT 3/8-16 X 1 1/2 HEX
5	10	1041-50008	LOCK WASHER 3/8
6	10	1041-50007	FLAT WASHER 3/8
7	1	2010-34551-1M	LENS RING MACH.
8	1	2013-34551-2	LEXAN LENS
9	1	1059-34485-9	7" LCD COLOR MONITOR (ALUM) MOUNTING BAR
10	1	2022-35163-14	MOUNTING PLATE
11	1	2022-35163-1	6/32 X 3/8" RD HD SCREW
12	10	1041-50038-14	# 6 LOCK WASHER
13	14	1041-50042	# 6 FLAT WASHER
14	8	1041-50041	# 6 FLAT WASHER
15	4	1041-50130	# 10 LOCK WASHER
16	6	1041-50001	# 10 LOCK WASHER
17	2	1041-50000-15	10-24 X 3/8" RD HD SCREW
18	1	1036-31476-2	9 POINT TERMINAL BLOCK
19	4	1041-50038	6/32 X 1/4" RD HD SCREW
20	2	1023-31651	FUSE HOLDER
21	1	1023-20500-1	FUSE 1 AMP
22	1	1023-20500-5	FUSE 5 AMP
23	4	1041-50000-1	10-24 X 1/2" RD HD SCREW
24	4	1041-50239-2	STANDOFF 1/4" HEX X 3/4" LONG
25	2	2022-35163-2	MOUNTING BAR
26	1	1038-33991	DESICCANT BAG
27	1	1033-34890	3/32" DIA. BUNA N O-RING
28	1	2010-34551-M	HOUSING MACH.
29	4	1041-50149-2	1/4-20 X 3/4" FLAT HD SCREW
30	2	7014-34592-1	MOUNTING FOOT
31	1	1048-34536-13	POTTING ENCLOSURE



Mining Controls Inc. 304-252-6243 www.minelightsystems.com

105-7015-34551-19 REV-A 7-26-11

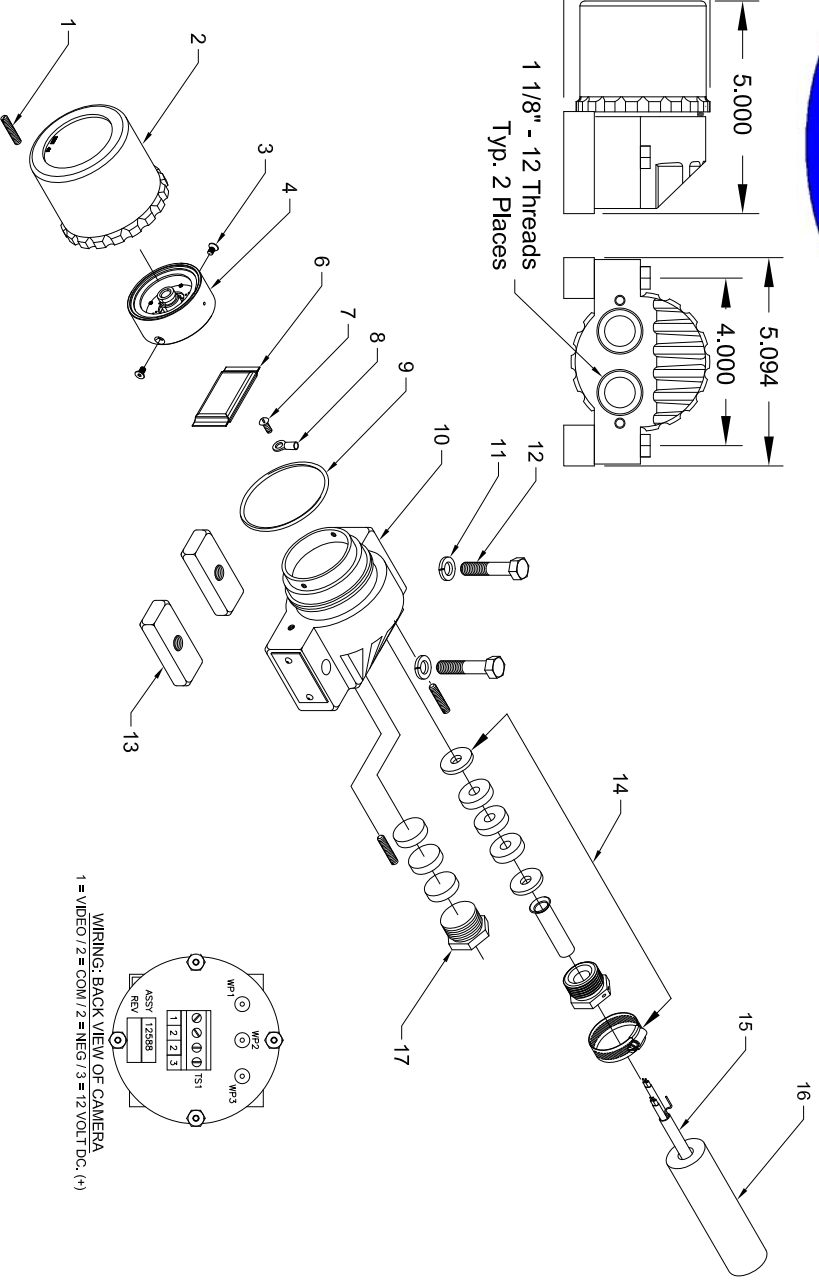


Mine Lighting Systems  
 Mining Controls Inc.  
 P.O. Box 1141  
 Beckley, WV 25802  
 304-252-6243  
 larry.rowley@elginindustries.com  
 www.minelightsystems.com

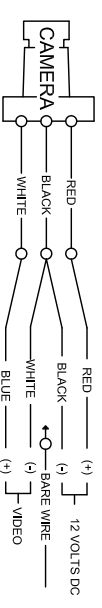
**7015-34290-14**

CAMERA MODEL MC150XP EXPLOSION PROOF WITH BLACK & WHITE 600 TV LINES RESOLUTION 0.0003 LUX LOW LIGHT CAMERA, WITH 3.6 mm LENS 12VDC 100mA

PA Approved 1246-94  
 MSHA Approved XP 3938-0 & -1



Item	Qty.	Part Number	Description
1	1	1041-50009-3	1/4" - 20 Locking Screw
2	1	2013-35120-1A	Alum. Lens Housing
3	2	1041-50002-17	8 - 32 X 3/8" Flat Head Screw
4	1	2023-35440-2	Camera Assembly
6	1	1038-33991	Desiccant Bag
7	1	1041-50002-15	8 - 32 Round Head Screw
8	1	1035-20302-3	Round Terminal Lug
9	1	2019-31137-1	O-Ring
10	1	2010-31678H-A	Alum. Housing
11	2	1041-50008	3/8" Lock Washer
12	2	1041-50006-6	Bolt 3/8"-16 X 1-3/4"
13	2	2022-32974	Mounting Foot
14	1	7017-20501-G-028	Packing Gland Assembly
15	36	6012-51139-11	2 Pair 24 GA. Shielded Cable
16	35	6013-51135	1/2" Conduit Hose
17	1	2024-20057-15A	Steel Plug Assembly



RESOLUTION = 600 TV LINES  
 AUTO GAIN & 10-BIT DSP  
 MIN. ILLUMINATION = 0.0003 LUX @ F1.2  
 IRIS CONTROL = AUTO  
 LENS = 3.6 mm  
 POWER = 12V DC @ 100mA

Mining Controls Inc. 304-252-6243 www.minelightsystems.com

SHEET 2 OF 2

105-7038-34290-14 02-09-2009

**MINING CONTROLS**  
 INCORPORATED  
 P.O. BOX 1141 BECKLEY, WV, 25801

WIRING DIAGRAM  
 4" LCD MONITOR

DATE DRAWN: 8-23-2011  
 DRAWN BY: RAJ  
 CHECKED BY:  
 PART NUMBER: WD 7015-35245-14  
 REV: A